

Kerikeri Zone Substation

Cobham Road, Kerikeri

Construction Period: October 2012 to June 2013

Main Contractor: UGL

Civil Contractor: Kerikeri Infrastructure

An essential component in Top Energy's TE2020 plan to improve the Far North's electricity supply and reduce outages is the construction of new substations in strategic locations.

The first of these - in Cobham Road, Kerikeri, commenced construction in October 2012 with a programmed completion of June 2013. This will split the load on the current Waipapa substation and significantly reduce the length of lines that supply customers. A combination of both of these will improve the reliability of supply for customers in Kerikeri and Waipapa.

What Do Substations Do?

The Kerikeri substation will reduce voltage from sub-transmission (33,000 volts) level to distribution (11,000 volts) level to supply the local electrical network via feeders and distribution transformers.

Design

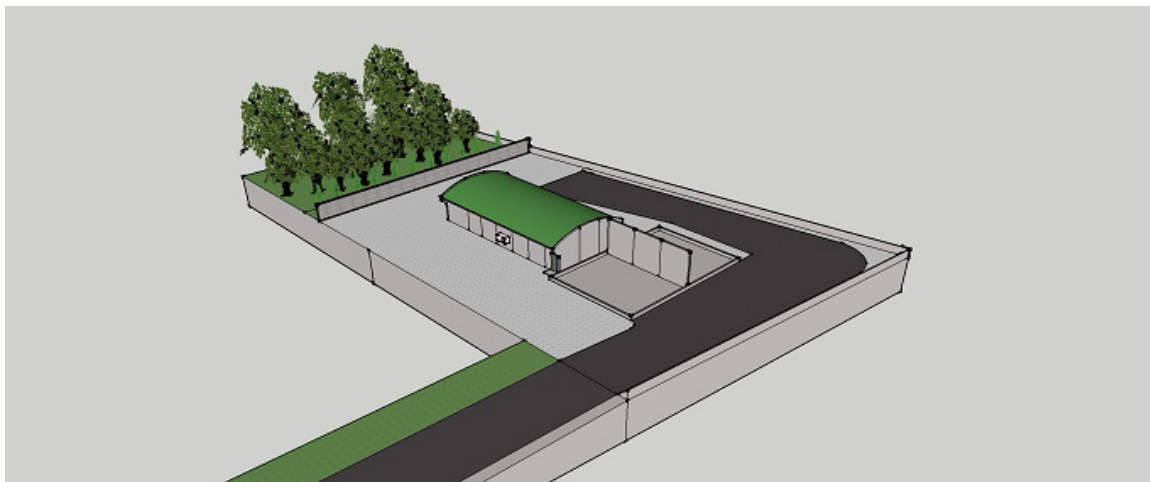
Top Energy required the architecturally designed Kerikeri Zone Substation to easily integrate into its local environment. Tilt slab concrete wall panels and curved long-span roof sheeting have proved to be low maintenance and permanent materials, and were considered appropriate for this application.

The site will be protected by a security fence and CCTV cameras. The perimeter of the site will be landscaped to a high standard to ensure the building will not detract from its surroundings.

Where possible the construction and associated works have been undertaken utilising local resources, materials and labour.



The Kerikeri Substation Transformers under construction



Conceptual 3D Image of Completed Substation Site